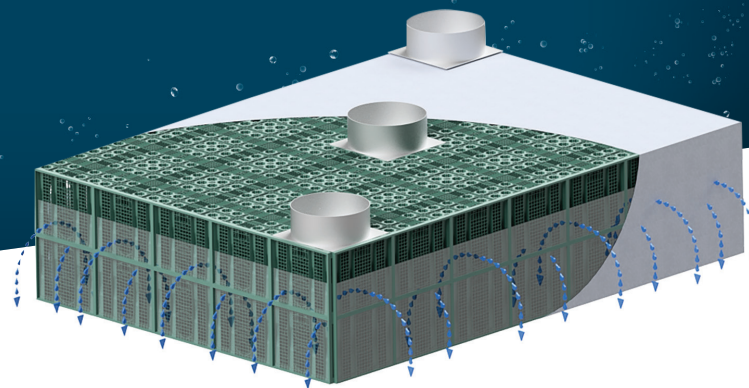




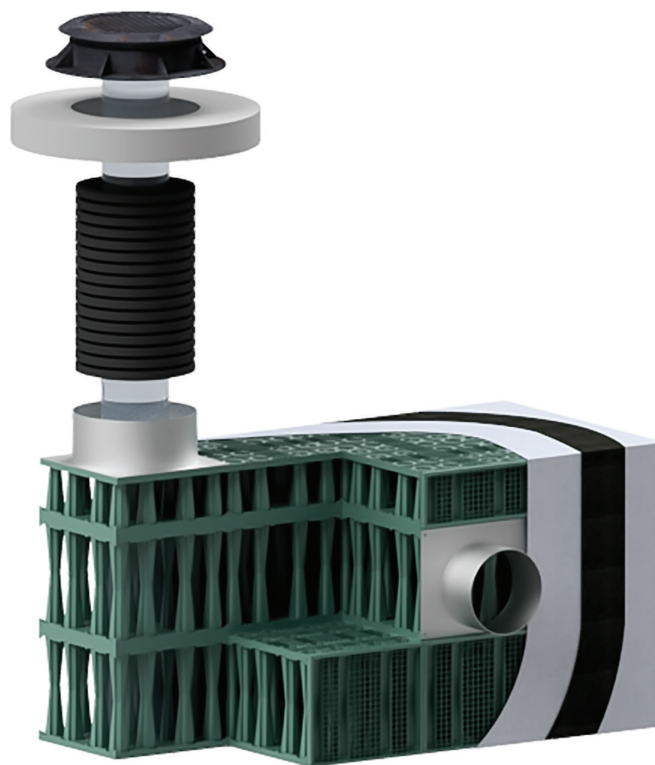
# EZStorm

Underground retention  
and detention



## STORMWATER MANAGEMENT

Protection of the receiving environment



EZStorm is a simple and innovative solution to retain or infiltrate stormwater.

The EZStorm is a modular block system with many design options. Each block is composed of two half-elements that are assembled on-site before installation.

Thanks to its superior mechanical strength, EZStorm can be installed under heavy or light roadways, offering multiple applications such as roads, parking lots, bike paths, pedestrian walkways, gardens, and parks.

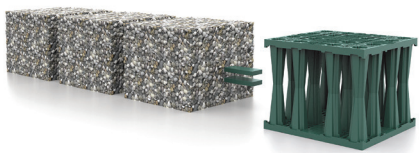
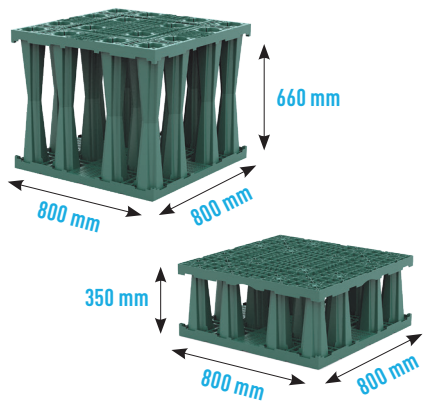
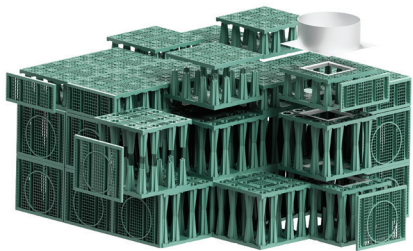


NEXT STORM

[nextstorm.ca](http://nextstorm.ca)

Phone : 450 373-8262 Toll-free : 1 877 565-6260

TeleFax : 450 373-0042 Email : [info@nextstorm.ca](mailto:info@nextstorm.ca)



Excavation volume reduced by **10% to 35%** compared to gravel solutions.

## ADVANTAGES



Ultra Lightweight Geocellular Structure (ULGS) offers **96% void ratio**, which minimizes the footprint and excavation volumes.



With custom-made installations with variable geometry, all configurations are possible using EZStorm modules.



The polypropylene structure can support a CL-625, H-25, or HS-20 load (up to 20 tons per axle under conditions).



Due to its superior structural capacity, EZStorm can be installed to a depth of 6 m with a maximum backfill of 4 m under conditions.



Quick and easy assembly and installation require less labor. The EZStorm system can be connected to pipes of various diameters.



EZStorm half-blocks offer a solution for low coverage and allow the height of a structure to be modulated in combination with full blocks.

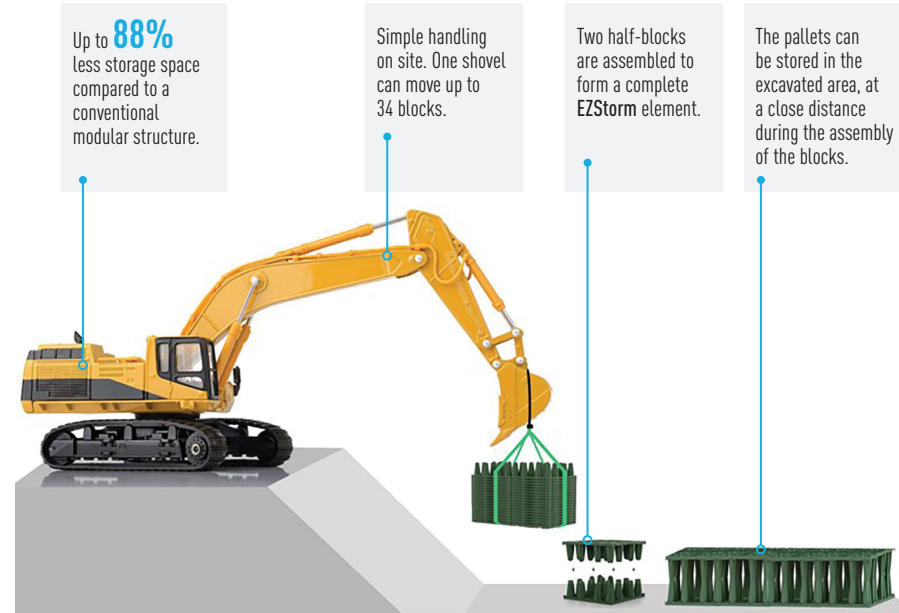


100% inspectable in all directions and easy to maintain.



Few accessories required

## IMPLEMENTATION OF THE BASIN



Up to **88%** less storage space compared to a conventional modular structure.

Simple handling on site. One shovel can move up to 34 blocks.

Two half-blocks are assembled to form a complete EZStorm element.

The pallets can be stored in the excavated area, at a close distance during the assembly of the blocks.

EZStorm's variable geometry custom installations allow for any desired configuration.

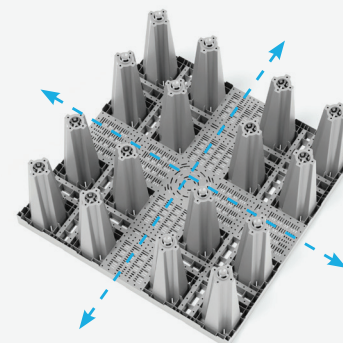
## INSPECTION AND MAINTENANCE

The EZStorm system was developed to facilitate inspection and cleaning operations directly from the ground surface. It is **100% inspectable** and offers complete visibility in all directions.

### INSPECTION

EZStorm blocks are designed with cross tunnels for easy checking of the basin.

Camera inspection and hydrocuring are therefore possible in 2 directions and 4 dimensions.



### CLEANING

The EZStorm tanks can be clean and flushed using a high-pressure sewer cleaning device. The entire cleaning process can be performed from the ground surface and does not require any intervention inside the basin.